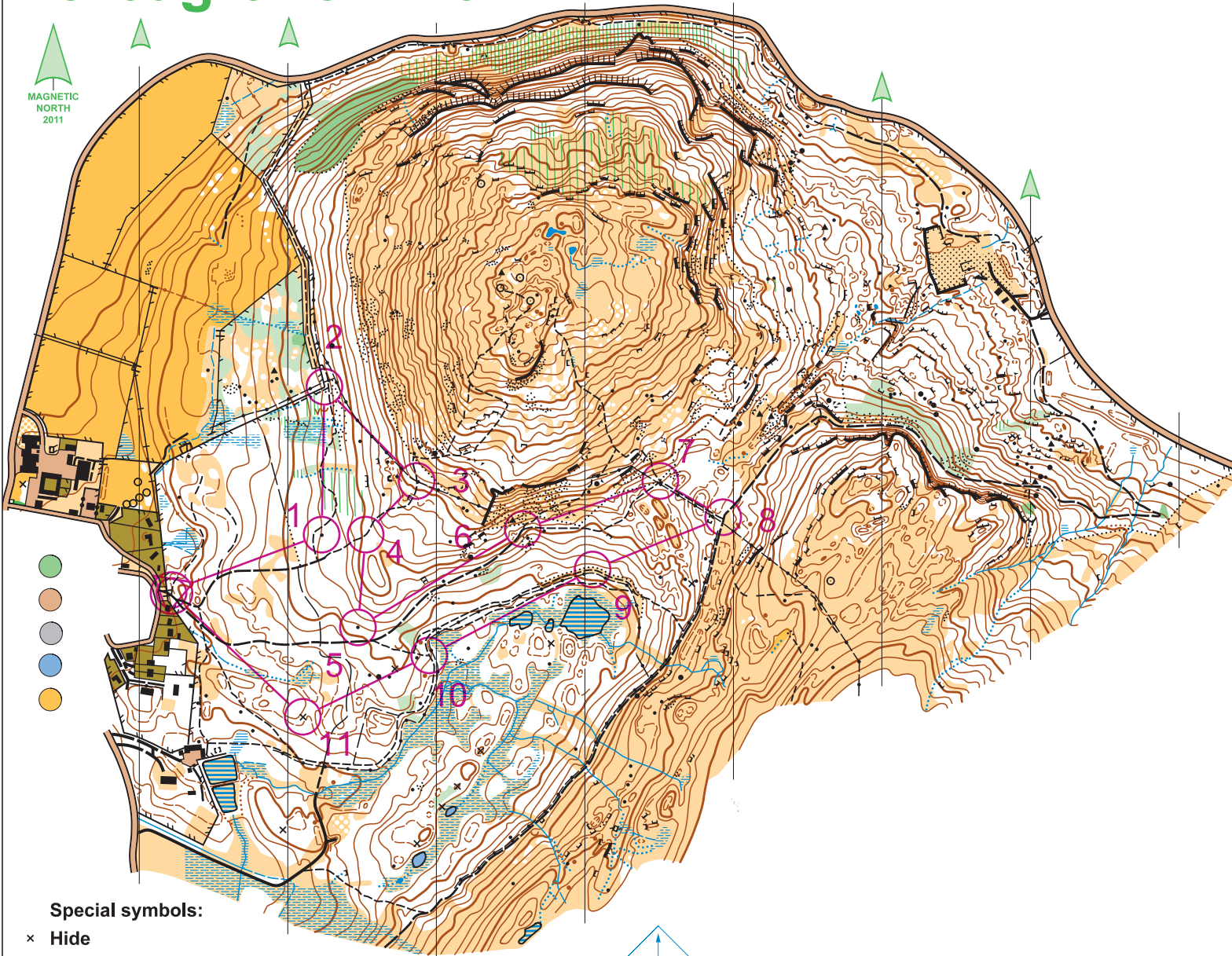


# Creag Choinnich

scale 1:10,000  
contour interval 5m

0 metres 100 150 200 250

MAGNETIC  
NORTH  
2011



## Creag Choinnich Semi-Permanent Course

Medium	2.8 km		
▷		/ \	Y
1	42	▲	○
2	44	▤	Y
3	43	/ \	X
4	45	/ \	<
5	41	▲	
6	38	/ \	Y
7	37	/ \	Y
8	36	/ \	Y
9	34	/ \	<
10	33	/ \	Y
11	40	X	○
○	<	300 m	>○

www.condes.net 9.1.15 MAROC  
Creag Choinnich MOBO

### Special symbols:

x Hide

Access to the land shown on this map is covered by the principles set out in the Scottish Outdoor Access Code. For further information see [www.outdooraccess-scotland.com](http://www.outdooraccess-scotland.com)

Old map...Contours Orienteering Survey Services 2005  
Hill top area...Photogrammetric plot...Stirling Surveys  
Survey & Cartography...August - November 2011  
.....Deeside Orienteering & Leisure Maps  
Copyright.....Mar Orienteering Club 2011  
Grid reference.....NO 164 915



Deeside Orienteering & Leisure Maps  
Gardens Cottage, Dess  
Aberdeenshire, AB34 5BA  
tel 013398 84447  
e-mail: [jon@big-jon.demon.co.uk](mailto:jon@big-jon.demon.co.uk)

**FAIRHURST**