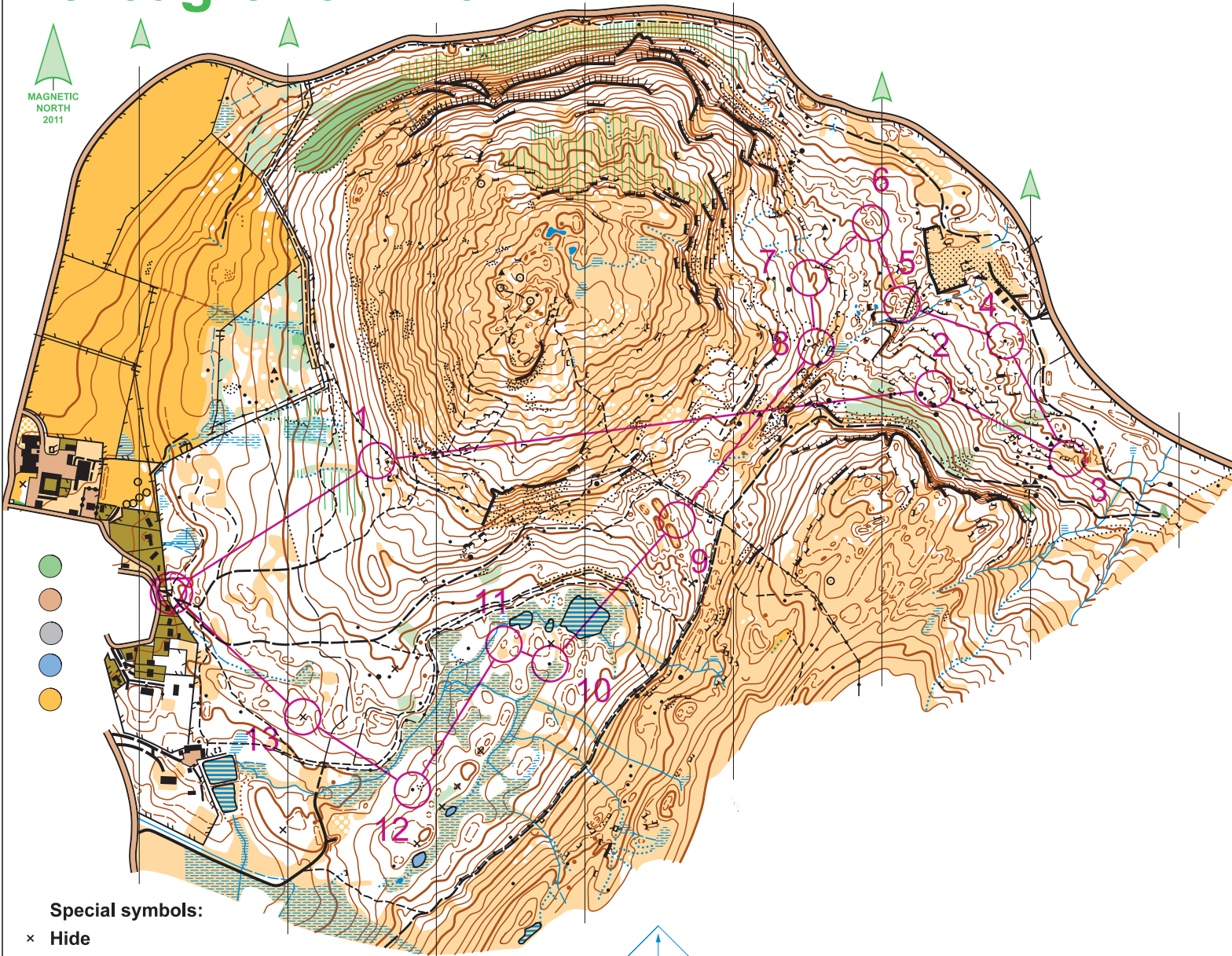


# Creag Choinnich

scale 1:10,000  
contour interval 5m

0 metres 100 150 200 250

MAGNETIC  
NORTH  
2011



- 
- 
- 
- 
- 

**Special symbols:**

× Hide

Access to the land shown on this map is covered by the principles set out in the Scottish Outdoor Access Code. For further information see [www.outdooraccess-scotland.com](http://www.outdooraccess-scotland.com)

Old map...Contours Orienteering Survey Services 2005  
Hill top area...Photogrammetric plot...Stirling Surveys  
Survey & Cartography...August - November 2011  
.....Deeside Orienteering & Leisure Maps  
Copyright.....Mar Orienteering Club 2011  
Grid reference.....NO 164 915



Deeside Orienteering & Leisure Maps  
Gardens Cottage, Dess  
Aberdeenshire, AB34 5BA  
tel 013398 84447  
e-mail: [jon@big-jon.demon.co.uk](mailto:jon@big-jon.demon.co.uk)

**FAIRHURST**

## Creag Choinnich Semi-Permanent Course

	Hard	4.0 km		
▷		↗ ↘		
1	56	≡		└
2	53	≡		└
3	57	≡		└
4	58	▲		
5	54	∩		
6	59	∩		
7	55	∩		
8	52	≡		✓
9	60	∩		
10	50	▲		
11	49	○		┌
12	47	▲		
13	40	×		○
		○ <	300 m	> ○

www.condes.net 9.2.1 MAROC  
Creag Choinnich MOBO PMC