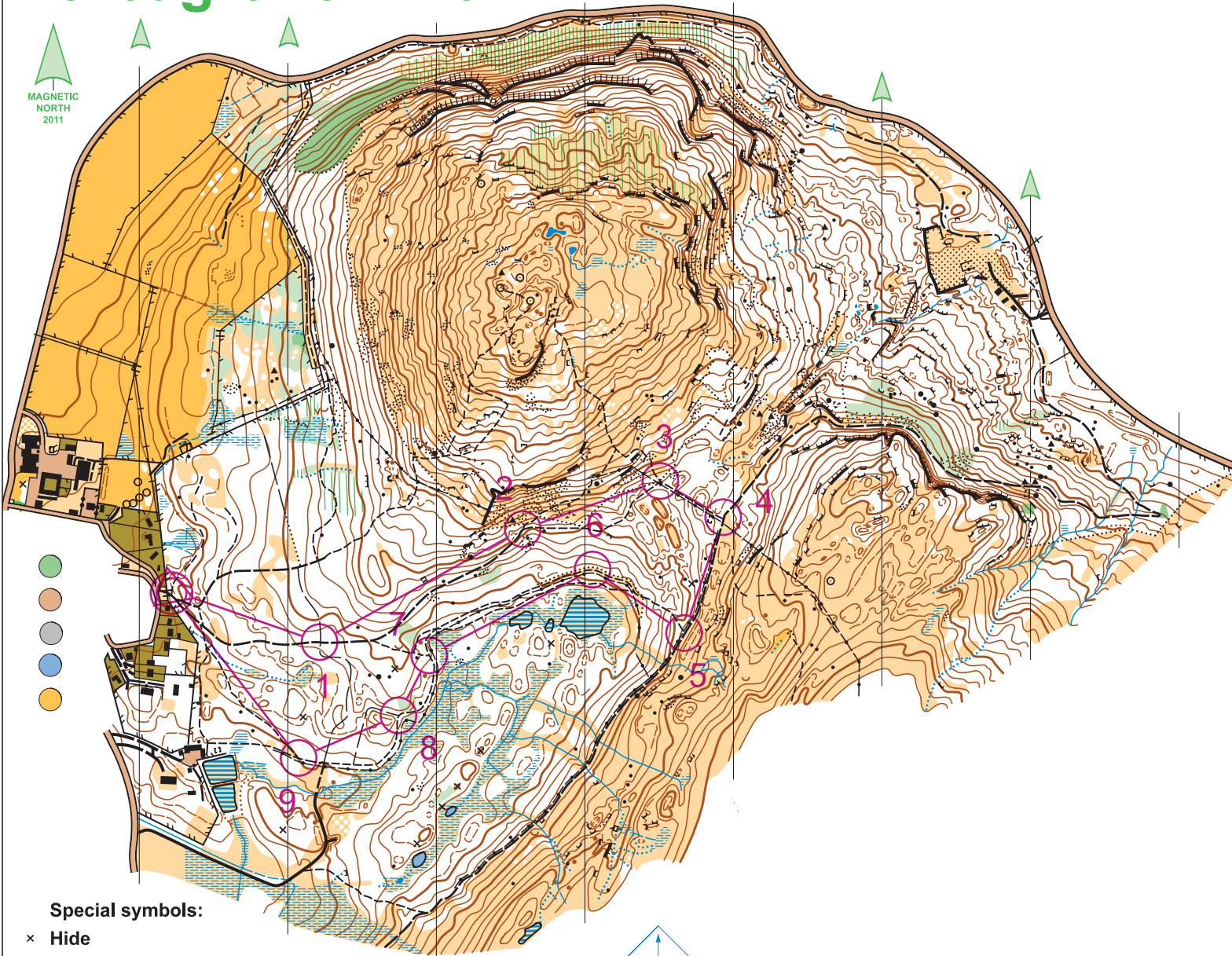


# Creag Choinnich

scale 1:10,000  
contour interval 5m

0 metres 100 150 200 250

MAGNETIC  
NORTH  
2011



- 
- 
- 
- 
- 

**Special symbols:**

× Hide

Creag Choinnich Semi-Permanent Course				
	Easy	2.4 km		
▷		/	Y	
1	39	/	Y	
2	38	/	Y	
3	37	/	Y	
4	36	/	Y	
5	35	/	Y	
6	34	/		<
7	33	/	Y	
8	32	/	Y	
9	31	/	Y	
		○ <	350 m	> ○

www.condes.net 9.1.5 MAROC  
Creag Choinnich MOBO

Access to the land shown on this map is covered by the principles set out in the Scottish Outdoor Access Code. For further information see [www.outdooraccess-scotland.com](http://www.outdooraccess-scotland.com)  
 Old map...Contours Orienteering Survey Services 2005  
 Hill top area...Photogrammetric plot...Stirling Surveys Survey & Cartography...August - November 2011  
 .....Deeside Orienteering & Leisure Maps  
 Copyright.....Mar Orienteering Club 2011  
 Grid reference.....NO 164 915



Deeside Orienteering & Leisure Maps  
Gardens Cottage, Dess  
Aberdeenshire, AB34 5BA  
tel 013398 84447  
e-mail: [jon@big-jon.demon.co.uk](mailto:jon@big-jon.demon.co.uk)

