

### 3. Networking MAROC and SOA PC

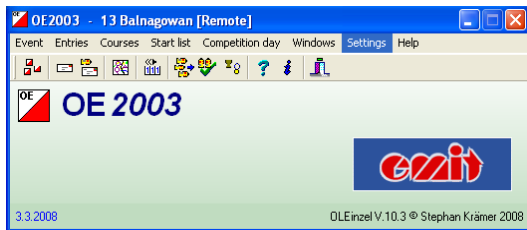
To speed up entries and generally allow tasks to be performed concurrently it is possible to network several PCs together. This is more necessary at larger events where it is possible to have several download and entry PCs. For most local, district and even SOL events (where there have been pre-entries and thus reducing the entry load) two PCs are the maximum needed. The MAROC PC is the master PC holding the main database and the second (SOA) PC used to access the main database, nothing is saved on the second PC. The MAROC PC is used the same as if it was being used on its own.

This can be set up and tested before the event.

Connect the two PCs together using the cable marked 'cross over'. Note: a normal network cable will not work as the wires must be crossed over in the cable for this simple form of direct networking.

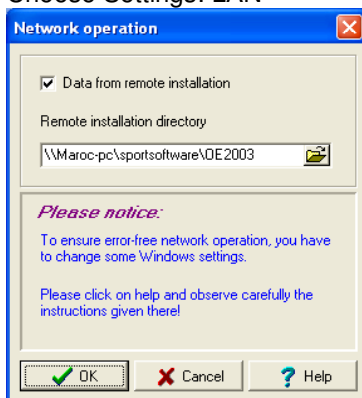
Start both PCs. When they are both fully booted up (for the SOA PC select the MAROC member profile) you will see the network connection icons in the 'Start' tray show a connection after a short period. Ignore messages about limited connectivity or unknown network.

The SOA PC now needs to connect to the SportSoftware database on the MAROC PC. Start SportSoftware and if you see the screen shown below with the current or previous MAROC event then it is already set up. Note the PC is shared with GRAMP and it may have last been used with one of their events.



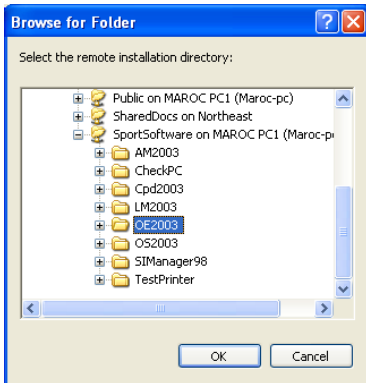
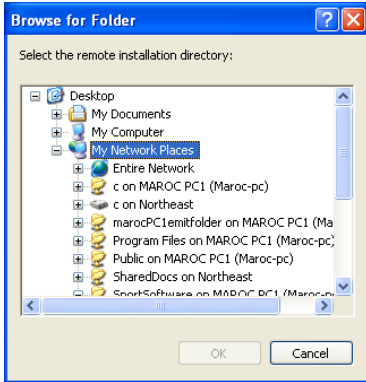
If you need to re-establish the link to the main databases on the MAROC PC do the following.

Choose Settings: LAN

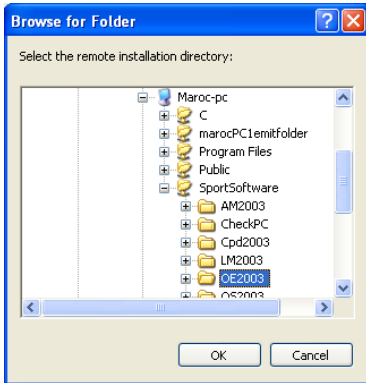
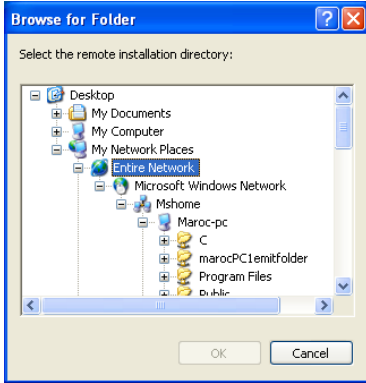


Tick 'Data from Remote installation' and browse to the SportSoftware\OE2003 directory on the remote PC.

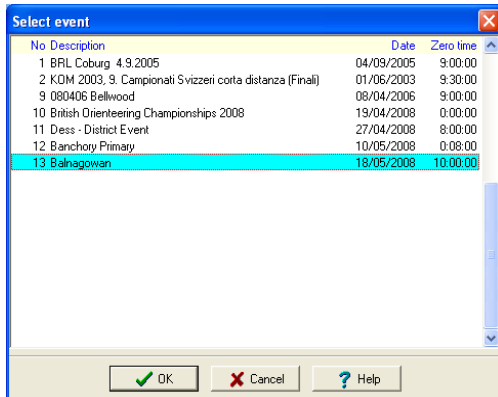
There are network mapping set up, in which case just select the OE2003 folder as shown below and click OK.



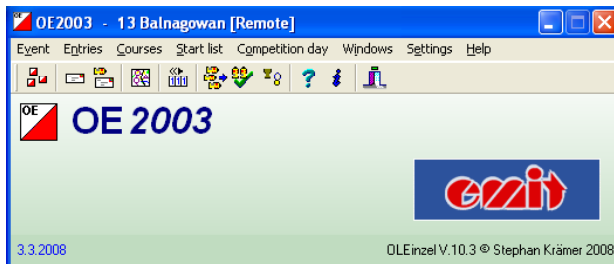
If this is not appearing browse as shown below and again click OK.



Now use the Event menu to Select your event (you are now looking at all the events on the MAROC PC) and select OK.



The main SportSoftware window will now show your event with [Remote] indicating is on another PC.



You can now perform direct entry, entry changes and tasks like correcting errors using the evaluate chips window.

Do not try to connect another download using without having first synchronised the PC clocks otherwise times will be wrong across the two PCs. There is an icon set up to do this on the SOA PC for this situation. Generally ensure you know what you are doing before trying anything like this.

When you no longer need the second PC or if its power is running low just complete the current task, close SportSoftware and shutdown the PC. The network cable can be removed from both PCs when the SOA PC is shutdown. Just continue to use the MAROC PC as normal.

<b>Document Update record</b>		
<b>Date</b>	<b>Who</b>	<b>Summary</b>
26/5/08	Graeme	First version
1/11/09	Graeme	Clarifications suggested by people who have used the guide